

**DROMONE®**  
intelligent:innovation

**PROVEN**



**FROM THE  
GROUND UP**



My customers must have the versatility and ease of use that the Dromone coupler provides, including the ability to reverse the buckets into the shovel position on the coupler. I sell the Dromone coupler with complete confidence in the product and the unmatched support that stands behind it.



— Wayne Massad  
Sales Representative  
Westside Tractor  
Rockdale, IL



# PROVEN

## RELIABLE AND SAFE IN FIELD CONDITIONS

The **Dromone Multi Lock** is a proven and innovative automatic hydraulic quick coupler designed and built to provide our customers with unmatched performance and versatility, ease of service, and reliability that creates an exceptional return on investment with a proven product

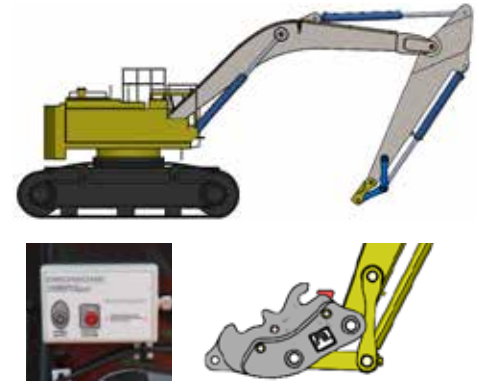
life cycle two times the industry standard. Above all, the **Dromone Multi Lock**, with its unique locking system, is **the highest standard for safety.**





# DROMONE<sup>®</sup>

intelligent:innovation



Rotate coupler to the transport position. Press power button, followed by control button. Hold bucket cylinder over relief to unlock coupler.

## PROVEN

### WE PROUDLY BRING YOU THE SAFEST COUPLER IN THE WORLD

**Say goodbye to manual features.** Fully automatic and hydraulic operations allow for complete operability and attachment changeability from within the cab.

- **Sequential Cab Control System**

where 3 stages are required to release attachment, eliminating unintentional, accidental release

- **Hydraulic check valve** fitted standard for double safety redundancy

**Say hello to operator comfort.** The Dromone Multi Lock Automatic Coupler is the coupler of choice for operators around the world. Designed with operator and site safety in mind, both attachment pin locks are visible to the machine operator for increased safety and reassurance.

## STANDARDS FULLY COMPLIANT – EN474, AS.4772-2008, ISO 13031 & 9001

#### 1978-2000

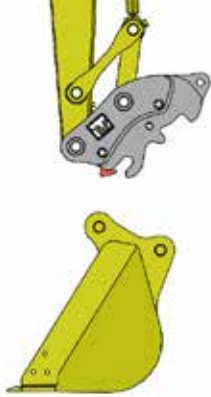
- First agriculture Pick-Up Hitch for European market developed.
- Supplies first OEM Pick Up Hitch.
- Supplies world's first Hydraulic Push Back Hitch.

#### 2000

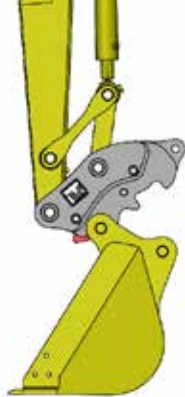
- First Excavator Hydraulic Quick Coupler for Europe is developed & launched.

#### 2003-2004

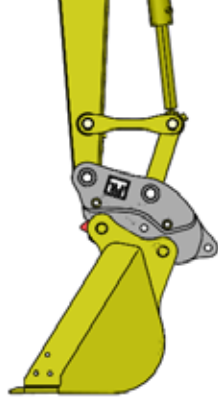
- Entered the North American market.
- First 2 distributors appointed.
- Auto-Lock Coupler launched in North American & European markets.



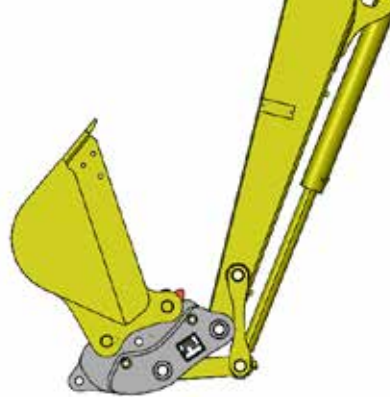
Rotate coupler to the dump position.



Lower stick to allow coupler to "SNAP" on and LOCK to the front bucket pin.



Lower the rear of the coupler onto the bucket until seated.



Rotate attachment to transport position. Press the Power button, hold bucket cylinder over relief. The coupler is now locked.



With the bucket in transport position, locking of the coupler can be visually confirmed by the operator from the cab.

## PROVEN DURABILITY & SERVICEABILITY

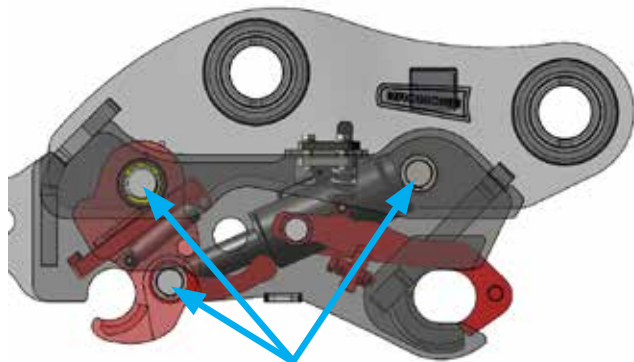
**Durability:** You can rely on the Dromone Multi Lock Automatic Coupler to deliver hour after hour, week after week, year after year.

- Longest-operating auto dual locking quick coupler
- Validated through more than 10,000 hours of endurance testing

**Serviceability:** With an understanding that downtime yields lost profits, we made servicing your Dromone Multi Lock Automatic Coupler as simple as possible.

## PROVEN SIMPLE DESIGN

- Serviceability: 15 spare part kits and three grease points



3 grease points

## PROVEN PERFORMANCE

**Designed and manufactured** in the state-of-the-art Dromone manufacturing facility in Europe, the Multi Lock Automatic Coupler is constructed using high strength steels and quality materials. The result: consistent quality, durability, and superior product performance.

With consideration to all of the components that make a coupler superior, the Multi Lock Automatic Coupler delivers. With the ideal balance between weight and pickup range, the Dromone Multi Lock Automatic Coupler offers efficient coupler weight and superior breakout force.

## PROVEN STRENGTH & VERSATILITY

- 6.6-to-121.25 Ton Machine Capability
- Efficient Coupler Weight & Pickup Range
- Superior Breakout Force
- Increased Attachment Size Flexibility, Higher Asset Utilization
- Heavy-Duty Certified Lifting Eye

2005-2006

- Range of Mechanical Quick Couplers developed.
- Tilt-Coupler launched.

2009

- Multi Lock Coupler developed & launched in Europe.
- First OEM Contract for Multi Lock Couplers signed.

2011-2013


- Sales increased by 18%.
- Operations expanded to 32 countries.





# QUICK COUPLERS & HITCHES – IT'S ALL WE DO

**Dromone Engineering**, an industry leader in hitching and coupler technology, provides products with optimal performance and ingenuity. Established in 1978 and headquartered in Ireland, we maintain a global distribution network, exporting to 39 countries worldwide. We continue to be a trusted name in construction and agriculture.

 In my business, I am switching buckets constantly. With the Dromone, it couldn't be easier: a simple hook-up and release. I like the safety of this coupler – especially the snap-on front lock. When it snaps on, it's locked. All I need now is the next one to be delivered.

2014-2015

- Began distribution of M Lock in New Zealand & Australia.

— **Justin Brummond**  
Superintendent  
American Backhoe Service  
University Park, IL



**DROMONE<sup>®</sup>**  
intelligent:innovation

**PROVEN**  
DESIGN ENGINEERING  
AND PERFORMANCE



**Dromone Engineering Ltd**  
**Oldcastle | Co. Meath | Ireland A82 YH63**  
**HQ Tel +353 (0)44 966 6346**  
**HQ Fax +353 (0)44 966 6236**  
**UK Tel +44 (0) 845 8624**  
**US Tel 00 1 (516) 340 38506**  
**eMail [sales@dromone.ie](mailto:sales@dromone.ie)**  
**Web [dromone.com](http://dromone.com)**

